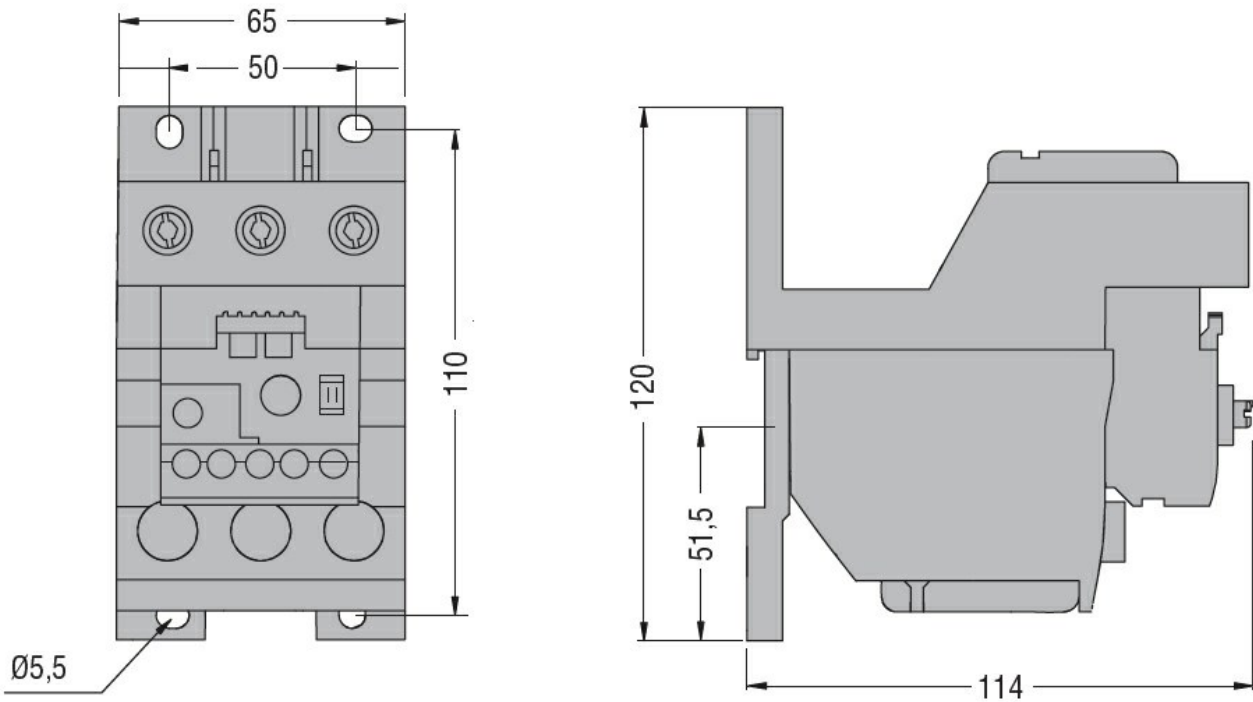


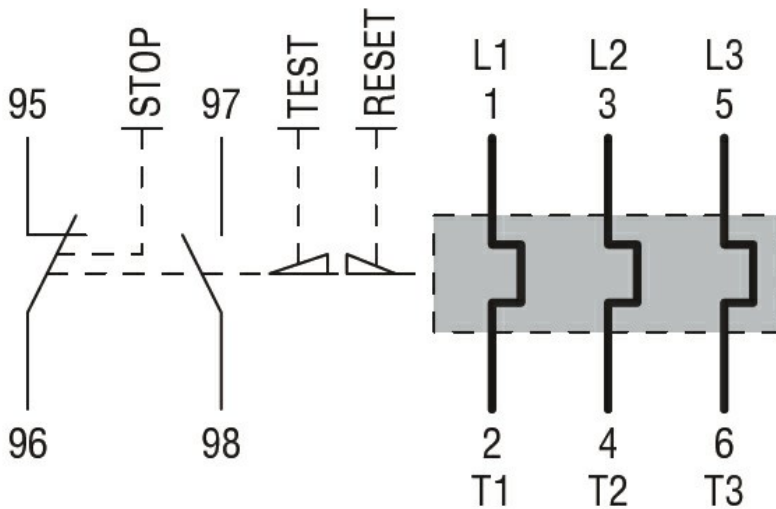


Product designation	RFE110		
Product type designation	Motor protection relay		
<b>General characteristics</b>			
Number of poles	Nr.	3	
Overvoltage category	III		
Pollution degree	3		
Frontal IP degree	IP20		
Type of release	Electronic thermal		
Protection fuse			
	gG (IEC)	A	200
	aM (IEC)	A	125
Phase failure detection	yes		
Reset mode	Manual or automatic		
<b>Power circuit characteristics</b>			
Rated insulation voltage $U_i$ IEC/EN	V	1000	
Rated impulse withstand voltage $U_{imp}$	kV	6	
Rated operational voltage	V	690	
Operational frequency			
	min	Hz	50
	max	Hz	60
Operational current $I_e$			
	Operational current min	A	22
	Operational current max	A	110
Tripping class	5 - 10 - 20 - 30		
Test Button	yes		
Trip indicator	yes		
Terminals			
	type	Yoke clamp	
	screw	M6	
	width	mm	9
	tool	Allen key 4	
Tightening torque for terminals			
	min	Nm	9
	max	Nm	9
	min	lbin	6.6
	max	lbin	6.6
<b>Auxiliary circuit characteristics</b>			
Auxiliary contacts			
	NO	Nr.	1
	NC	Nr.	1
Auxiliary Rated insulation voltage $U_i$ IEC/EN	V	690	
Auxiliary Rated impulse withstand voltage $U_{imp}$	kV	6	

Auxiliary Rated operational voltage	V	690
Operating current AC15	24V 120V 240V 380V 480V 500V 600V	A 3 3 1.5 0.95 0.75 0.72 0.6
Operating current DC13	125V 600V	A 0.11 0.22
IEC Conventional free air thermal current I <sub>th</sub>	A	10
Terminals	Auxiliary circuit type Auxiliary circuit screw Auxiliary circuit width Auxiliary circuit tool	screw and washer M3,5 7 mm Phillips 2
Conductor section	Auxiliary circuit Flexible w/o lug max Auxiliary circuit Flexible c/w lug max	mm <sup>2</sup> 2.5 mm <sup>2</sup> 2.5
Tightening torque for terminals	Auxiliary circuit min Auxiliary circuit max Auxiliary circuit min Auxiliary circuit max	Nm 0.8 Nm 0.8 lbin 0.6 lbin 0.6
UL/CSA and IEC/EN 60947-5-1 designation		B600-R300
<b>Ambient conditions</b>		
Operating temperature	min max	°C -25 °C 70
Storage temperature	min max	°C -55 °C 80
Compensation temperature	min max	°C -25 °C 70
Max altitude	m	3000
<b>Mechanical features</b>		
Operating position	normal allowable	Vertical plan ±30°
Fixing		Independent mounting
Weight	g	195
<b>UL technical data</b>		
Full-load current (FLA) for three-phase AC motor	at 480V at 600V	A 110 A 110
<b>Dimensions</b>		



Wiring diagrams



Certifications and compliance

Compliance

- CSA C22.2 n° 60947-1
- CSA C22.2 n° 60947-4-1
- IEC/EN 60947-1; IEC/EN 60947-4-1
- UL 60947-1
- UL 60947-4-1

Certifications

cULus

ETIM classification

ETIM 8.0

EC001080 -  
Electronic  
overload relay